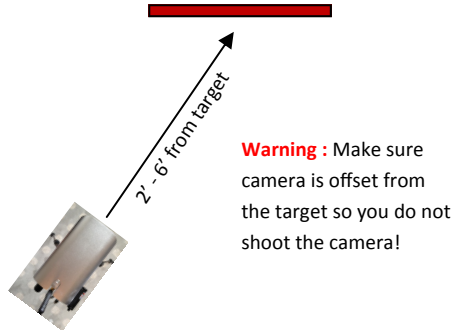


BULLSEYE CAMERA SYSTEMS QUICK REFERENCE - LONG RANGE EDITION

SETTING UP THE TRIPOD AND CAMERA

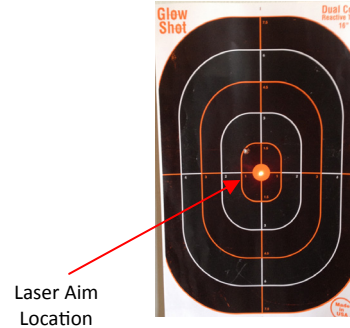


Set the tripod up and snap the base of the camera into the locking base of the tripod camera stand.

Adjust the tripod so that the camera lense is approximately at the same level as the center of your target.

1

ALIGN THE CAMERA TO THE TARGET



Using the small laser on the right side of the camera, point the camera at the center of the target. This does not have to be exact, just in the general center area.

Turn the laser OFF after you have aligned the camera.

2

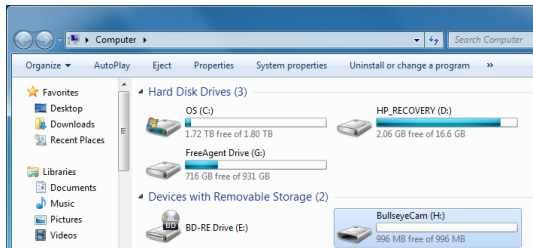
POWER UP / PLUG IN THE SYSTEM



Plug the router cable (green), camera cable (yellow) and booster cable (red) into the battery in the order shown above and depress the battery switch located on the right side of the battery. Rotate the antenna so it points straight up (vertical).

3

RUN THE SOFTWARE (Windows)



Insert the supplied USB drive into your laptop USB port. Windows will prompt you to open the USB drive to view files or you may navigate to the drive via the Computer icon on your desktop.

Once opened - double click the BullseyeTargetManager icon to start the software.

RUN THE SOFTWARE (iPhone/iPad)



1. Download the Bullseye Target Manager App from the Apple App Store.
2. You must **connect to the Bullseye Camera Systems WIFI** prior to running the application.
3. Start the Bullseye Target Manager App and select **"New Session"** and click **"YES"**



Bullseye Target Manager App

RUN THE SOFTWARE (Android)



1. Download the Bullseye Target Manager App from the Google Play Store.
2. You must **connect to the Bullseye Camera Systems WIFI** prior to running the application.
3. Start the Bullseye Target Manager App and select **"New Session"** and click **"YES"**



Bullseye Target Manager App

4